



SJP Ultrasonics Pvt. Ltd.



Where
Speed and Growth
is a way of Life

We Serve

Automotive | Electronics | Food & Packaging | FMCG

Aerospace | Medical | Textile | Toys

Who We Are

We are a Complete Plastic Joining Solution provider providing end to end solutions on welding plastics. From design to manufacturing, from trial to installation, we provide complete support to our customer.

We deal into supplying and manufacturing of machinery and tools for various plastic joining technologies like Ultrasonic welding, Vibration welding, Hot plate welding, Spin welding, Heat staking, laser welding and IR welding.



Automotive



Aerospace

'One Stop Solution'

for

plastic joining

process.



Medical



Electronics

Specialized in

providing

remote design solutions

and

vertical integration.



FMCG



Food & Packaging



Textile

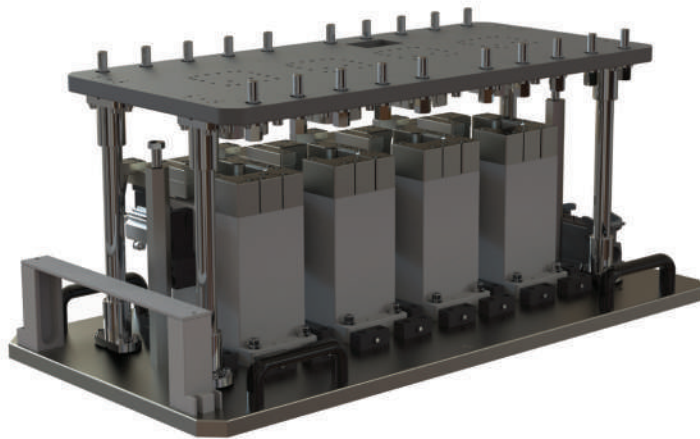


Toys

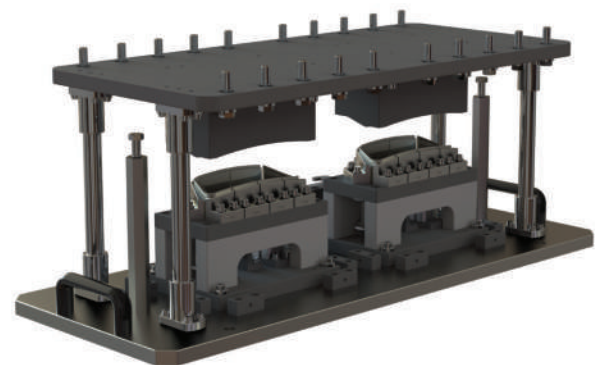
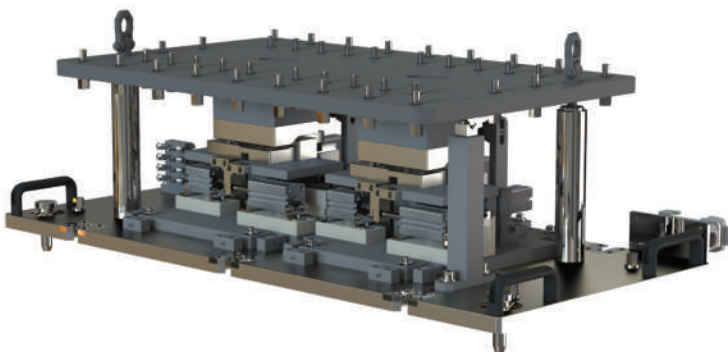


VIBRATION WELDING

- Features**
- | Frequency 80 Hz to 360 Hz
 - | Noise level below 80 dba
 - | Upper tool weight carrying capacity from minimum 15 Kg to maximum 200 Kg
 - | Lift platform contains 4 continuous supporting guide-bars and 8 reciprocating self-lubricating bearings
 - | 78L tank and proportional valve hydraulic power unit



| 4 Cavity Tooling |



| 2 Cavity Tooling |

Common Features

- | Hardened Lower Nest for Housing
- | Aluminium Alloy Base Plates
- | Compatible with any make Hf Vibration Welding Machine
- | Pu Poured Upper Nest To Avoid Scratches On Lens



ULTRASONIC WELDING



LINGKE灵科

Frequency | 15 Khz / 20 Khz
Power | 1500 W / 2600 W / 4200 W
Control | Time Control

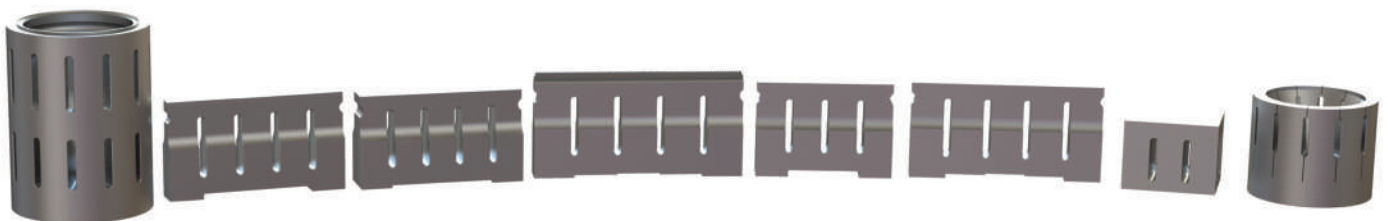


LINGGAO灵高®

Frequency | 20 Khz / 35 Khz
Power | 1000 W / 2000 W / 3000 W
Control | Time / Energy / Distance



Frequency | 20 Khz / 35 Khz
Power | 900 W / 1000 W
Control | Time Control



ULTRASONIC WELDING



Frequency | 15 Khz / 20 Khz
Power | 1200 W / 2200 W / 3500 W / 4200 W
Control | Time Control
 Time & Energy Control
 Time, Energy and Distance Control

Frequency | 15 Khz / 20 Khz / 35 Khz
Power | 1400 W / 2000 W / 2600 W / 4200 W
Control | Time Control
 Time & Energy Control
 Time, Energy and Distance Control



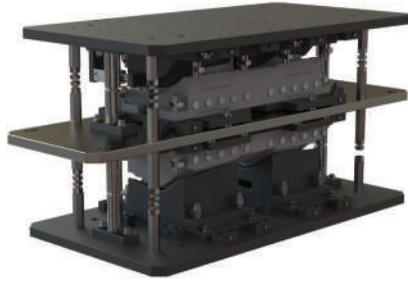
Frequency | 35 Khz
Power | 1200 W
Control | Time Control /
 Time and Continuous



HOT PLATE WELDING

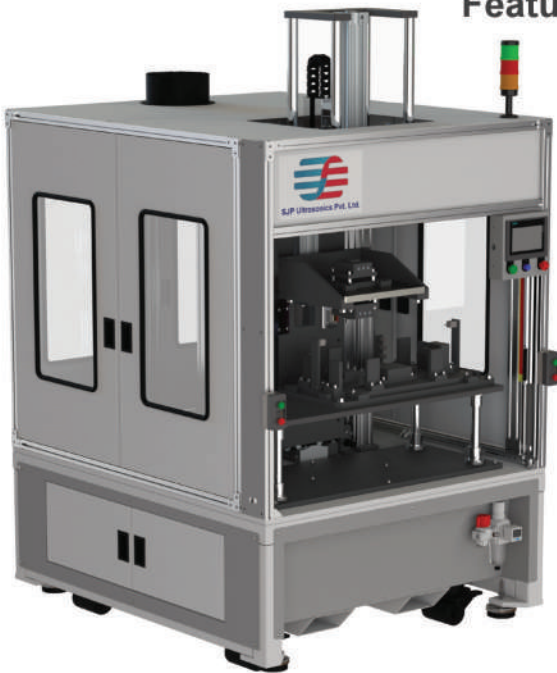
Pneumatic / Hydraulic / Servo Hot Plate welding Machine

- Features**
- | Pneumatic controlled
 - | Max. Welding Capacity – 600 mm X 400 mm
 - | Heating Zones – 4 Nos.
(can be made 8 Nos. as per requirement)
 - | Max. Load Capacity – 12 Kw
(can be changed as per requirement)



Pneumatic Controlled Hot Plate Welding Machine with Fixture

- Features**
- | Multiple Fixtures can be adapted
 - | Max. Load capacity – 12 Kw
 - | Max. Part size – 250 mm X 250 mm



Hot Plate Welding Fixture

- Features**
- | Mechanical Stoppers To Achieve Required Melt
 - | Mechanical Stoppers To Achieve Required Depth
 - | Aluminium / Bronzo Heat Platen
 - | Specialized Teflon Coating
 - | Designed To Accommodate On Standard Hot Plate Welding Machine



HEAT STACKING

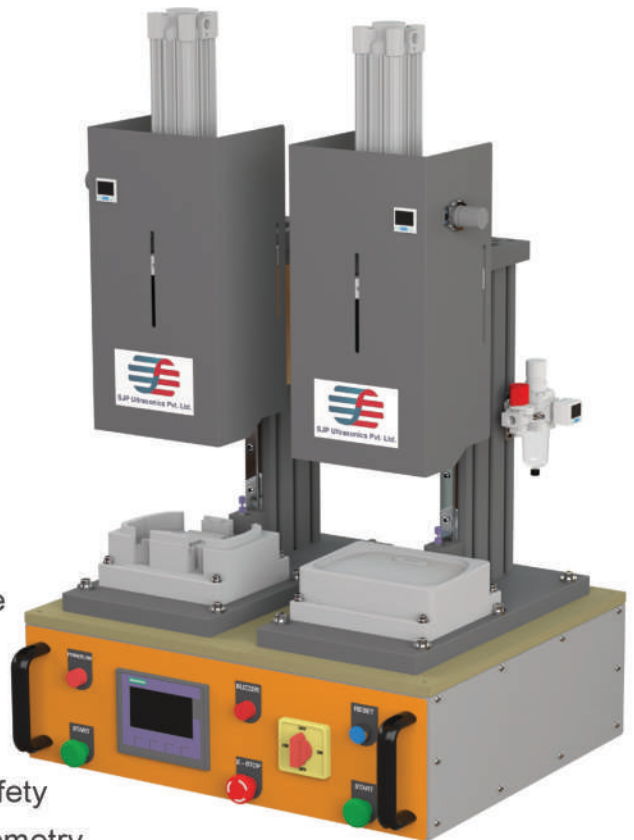
PNEUMATIC / SERVO Controlled Multi-head Machine with Trolley

- Features** | Multi Stack Heat Staking Machine
| Cassette Type Machine
| Quick Changeover Facility Max. 150 Seconds
| Individual Temp. Control



PNEUMATIC Controlled Machine

- Features** | Compact Table Top Heat Staking Machine
| Pneumatically Controlled Dual Head
| Ergonomically Designed
| Outer Cover For Heating Plates
| Dual Hand Start Buttons For Operator Safety
| Heating Plates Designed As Per Part Geometry



SPM & AUTOMATION

3 Axis Laser Cutting Machine

- Features**
- | 3 Axis XYZ Gantry Machine.
 - | CO2 Laser 100W German make
 - | Plastic Cutting speed 35mm/m
 - | Can cut flat profile plastic.
 - | Can cut upto 10mm thickness.
 - | Quick tool change facility available with change in program.
 - | No marking or burr observed after cutting.



Heat Staking Machine

- Features**
- | Quick Fixture changeover facility available.
 - | Temperature can be controlled by HMI.
 - | Quick change replacement brass heater tip.

Dual Robotics Ultrasonic Welding SPM

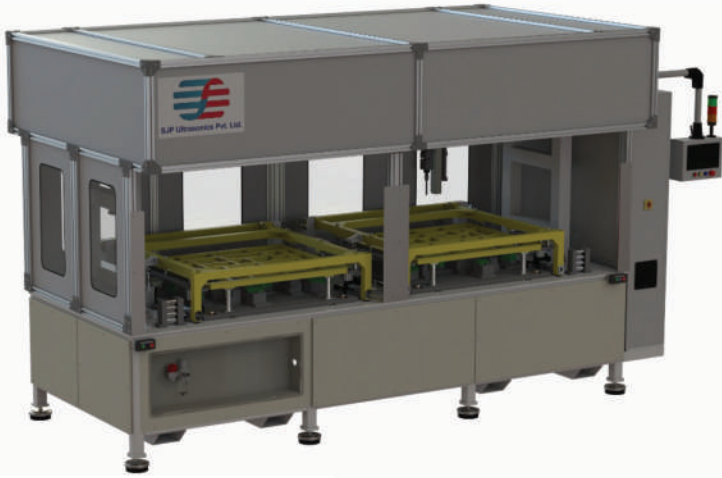
- Features**
- | 6 axis Fanuc Robot with Dual head Ultrasonic Stack.
 - | Can optimize minimum welding cycle time due to Dual Robot welding simultaneously.
 - | Changeover fixture with trolley facility available.
 - | Individual ultrasonic welding stack parameter is controlled by HMI.



SPM & AUTOMATION

Dual XYZ Ultrasonic Welding SPM

- Features**
- | 3 axis XYZ Gantry Machine.
 - | Dual Head Robot with Ultrasonic attachment.
 - | Pivot type clamping mechanism to hold the part.
 - | Individual Robot travel and Dept parameter can be controlled by HMI.



N95 Face mask machine

- Features**
- | Can accommodate up to 6 layers of fabric.
 - | Automatic Plastic Inner Nose clip insertion mechanism.
 - | Blank N95
 - | Can produce 40 mask per minute.
 - | Side seal welding and Ear loop welding process on individual stations.

Rotary Assembly Automation Machine for connector

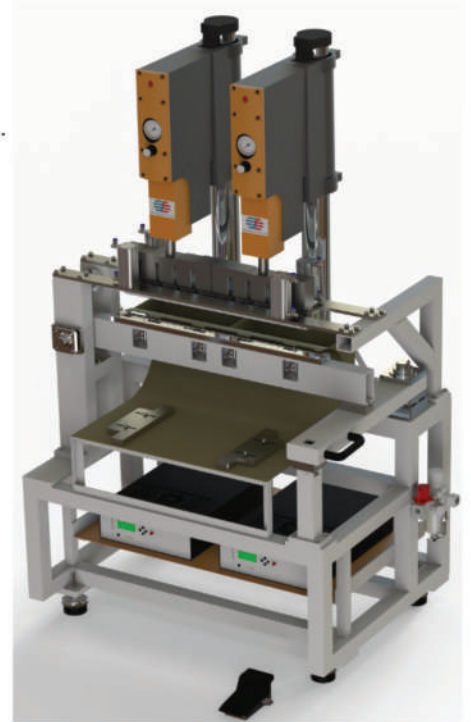
- Features**
- | 8 station Rotary indexer with dual fixture facility.
 - | Assembly with Pokayoke vision-based system for internal and external component for assembly.
 - | Individual Air leak testing station facility.
 - | Automatic Batch Code laser printing.
 - | Automatic ejection.
 - | Manpower saving and improvement in production speed.



SPM & AUTOMATION

Dual Ultrasonic System for Gyser Welding

- Features** | Taiwan make 2600W Ultrasonic welding machines.
| Welds 600mm area in single stroke.
| Welding distance & speed controlled by PLC HMI.



Ultrasonic Welding SPM for Blister Packaging

- Features** | Automatic Blister feeding by input conveyor.
| Parallel Pick & Place and Ultrasonic Blister welding operation.
| Can weld 3 no's Blister at a time.

Ultrasonic Welding SPM for Blower Welding

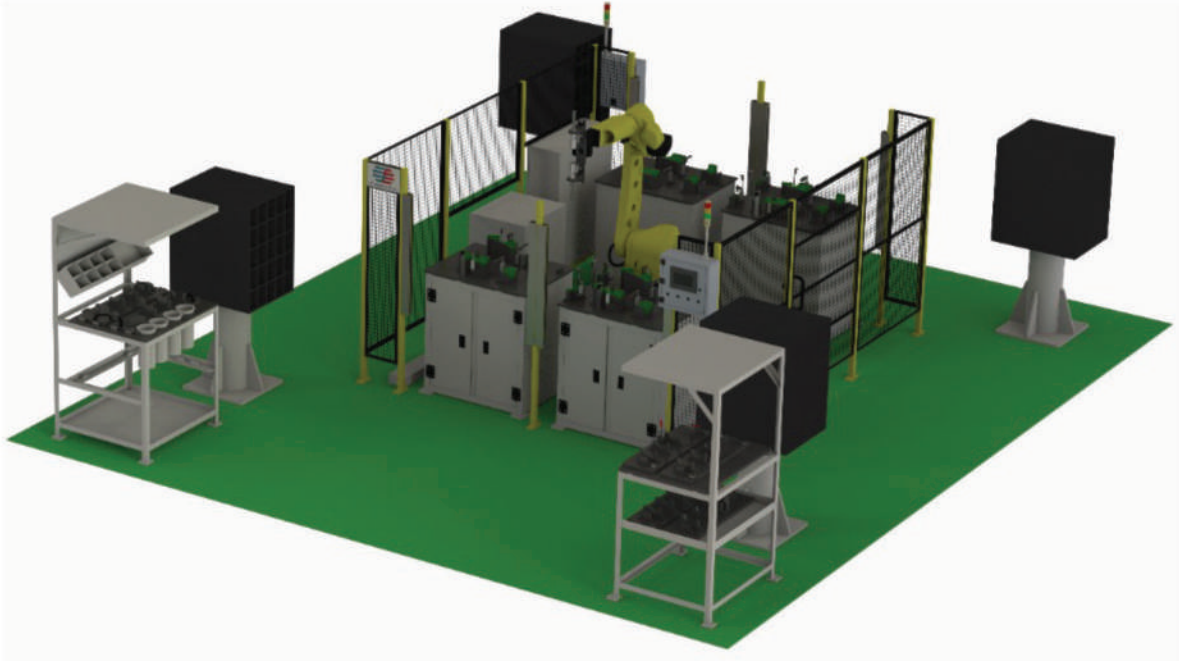
- Features** | Can weld up to 8 no's Blower stack's at a time.
| Servo controlled machine.
| Total stack length can be defined and displayed on HMI.
| Taiwan make 2600W Ultrasonic Welding Machine.
| Machine can accommodate up to 4 variants of Blower sizes (90mm, 95mm, 98mm, 103mm).



SPM & AUTOMATION

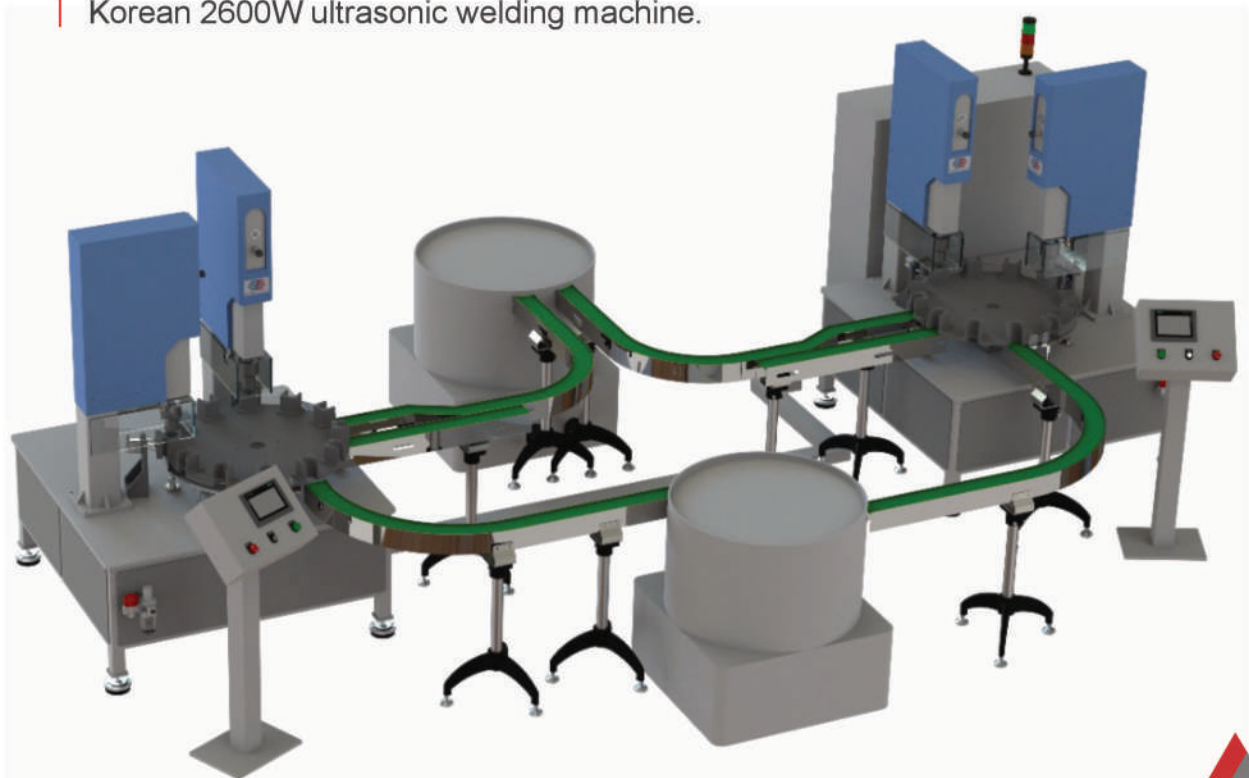
6 Axis Robot Ultrasonic Welding SPM

- Features**
- | 6 axis Fanuc Robot with Single head Ultrasonic Stack.
 - | Can optimize minimum welding cycle time due to Single Robot welding simultaneously.
 - | Changeover fixture with trolley facility available.
 - | Individual ultrasonic welding stack parameter is controlled by HMI.



Ultrasonic Welding Automation Machine for Food Container Lid Welding.

- Features**
- | 2 no's separate conveyor feeding line with 2 no's separate ultrasonic welding systems.
 - | Automatic loading and unloading mechanism.
 - | Can weld upto 30no's container lid in a minute.
 - | Korean 2600W ultrasonic welding machine.



Contact

Jignesh Parekh | +91 98206 35692

Dhawal Shah | +91 91675 96939

Kaushik Joshi | +91 90280 71436



Our Locations

Mumbai | Unit 1 & 2, Shiv Shankar Complex 2, Bldg. No.5, Opp Golden Chariot hotel, Highway Vasai East, District Palghar - 401208. Maharashtra, India.

Gurgaon | Plot No.13 - C Phase - 5, Udyog Vihar, Gurgaon, Haryana - 122001.

Chennai | Unit 1, Netaji Street, Ekkattuthangal, Chennai - 600032.



www.sjpultrasonics.in



jignesh.parekh@sjpultrasonics.in